

Hickory Falls

PUD 2019-01

ENGINEER / SURVEYOR

Tulsa Engineering & Planning Associates, Inc.

an Oklahoma corporation
9810 E. 42nd Street, Suite 100
Tulsa, Oklahoma 74146
Phone: 918.252.9621

Russell K. Fischer, PE, CFM, Senior Project Engineer
rkf@tulaengineering.com

CERTIFICATE OF AUTHORIZATION NO. 531
RENEWAL DATE: JUNE 30, 2023

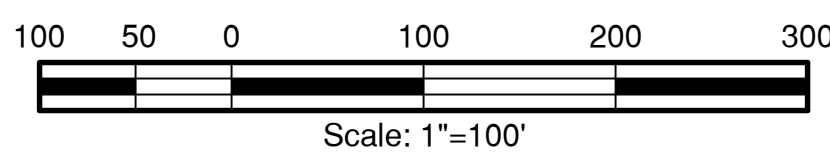
A subdivision being part of the N/2 of the NE/4 of Section 30, T-18-N, R-12-E,
of the Indian Base and Meridian, City of Sapulpa, Creek County, State of Oklahoma

OWNER / DEVELOPER

Hickory Falls, L.L.C.

an Oklahoma limited liability company
P.O. Box 991
Jenks, Oklahoma 74037
Phone: 918.298.2101

Rob Miles, Managing Member
rob.miles@milestonehomesok.com



UNPLATTED



Legend

Emt. = Easement	Res. = Reserve
BL = Building Line	ROW = Right of Way
Bk. = Book	O.D.E. = Overland Drainage Easement
Pg. = Page	UE = Utility Easement
L.N.A. = Limits of No Access	
— = ROW Dedicated by this Plat	

Monument Notes

A 5/8" x 18" deformed bar with a yellow plastic cap stamped "TEP CA531" to be set at all plat boundary corners, prior to recordation unless noted otherwise.

A 3/8" x 18" deformed bar with a yellow plastic cap stamped "TEP CA531" to be set at all lot corners after completion of improvements, unless noted otherwise.

A 3/8" x 18" deformed bar with a yellow plastic cap stamped "TEP CA531" to be set at all street centerline intersections, points of curve, points of tangent, points of compound curve, points of reverse curve, center of cul-de-sacs and center of eyebrows, after completion of improvements, unless noted otherwise.

Basis of Bearings

The non-astronomic bearings are based on an assumed bearing of S 89°09'10"W along the north line of Section 30, T-18-N, R-12-E of the Indian Base and Meridian, Creek County, State of Oklahoma, according to the U.S. Government Survey thereof.

Benchmark

Aerial Data Service Monument No. 318 - A 2" aluminum cap set in concrete stamped "318". The cap is 260 feet south of the intersection of Hickory Hill Road and Stanfield Road, 65 feet east of the centerline of Hickory Hill Road and 43 feet northwest of a 500 rail in a fence brace post.

North: 375793.544 Elevation = 674.73.00
East: 2540135.877 NAVD 1988
NAD83 (1993)

Note

1. Individual sanitary sewer systems (aerobic system) typical per lot.
2. For ONG Assessments refer to 1.2.5 within the restrictive covenants.

Lot Addresses

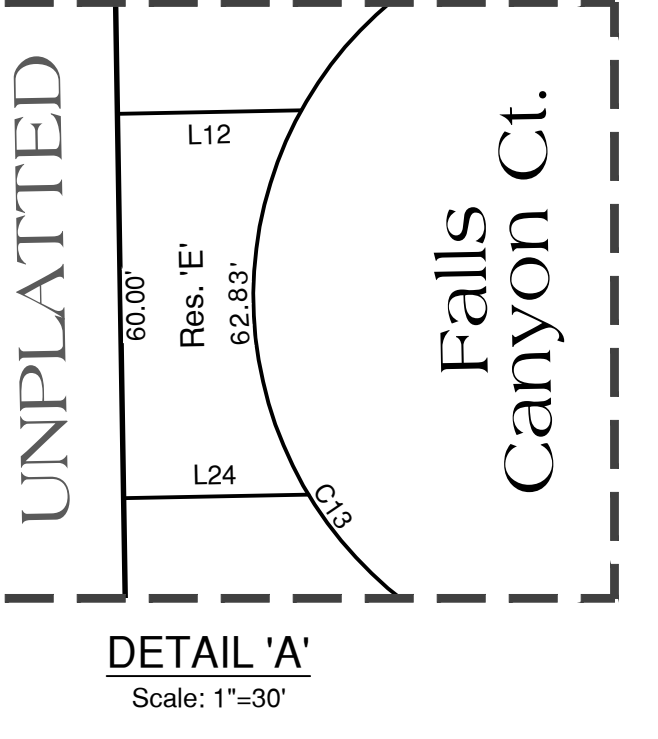
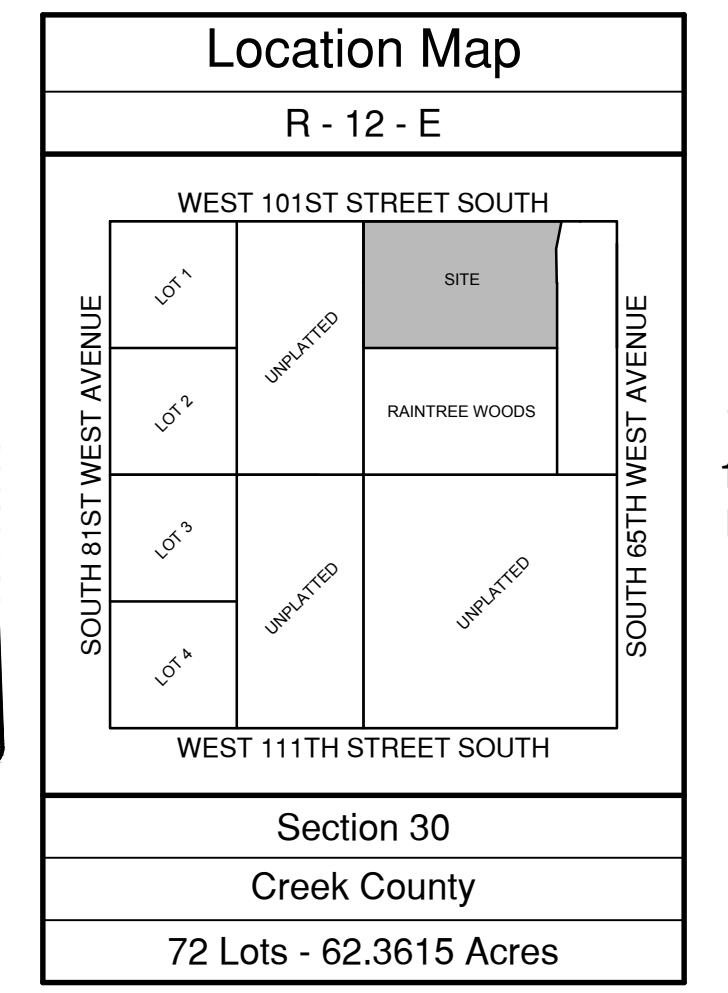
Addresses shown on this plat were accurate at the time this plat was filed. Addresses are subject to change and should never be relied upon in place of the legal description.

Line Table

No.	Bearing	Distance	No.	Bearing	Distance	No.	Bearing	Distance	No.	Bearing	Distance
L1	S 88°23'28"W	28.16'	L8	N 84°10'16"E	57.26'	L15	S 89°09'35"W	26.84'	L22	N 43°58'18"E	14.15'
L2	S 79°51'24"W	11.99'	L9	S 88°55'26"W	40.99'	L16	S 88°20'08"E	43.76'	L23	N 88°55'26"E	31.14'
L3	S 79°51'24"W	12.01'	L10	N 84°10'16"E	58.38'	L17	N 79°15'33"E	20.68'	L24	N 88°55'26"E	28.86'
L4	N 29°36'31"E	40.33'	L11	N 44°29'42"E	16.54'	L18	N 71°22'50"W	18.04'			
L5	N 57°14'10"E	49.74'	L12	S 88°55'26"W	28.72'	L19	N 18°37'10"E	8.87'			
L6	N 80°18'19"E	37.84'	L13	N 71°22'50"W	18.04'	L20	N 71°22'50"W	5.83'			
L7	N 36°52'17"E	39.82'	L14	N 72°05'24"E	5.43'	L21	N 01°04'34"W	18.44'			

Curve Table

No.	Delta	Radius	Length	Chord Bearing	Chord Distance	No.	Delta	Radius	Length	Chord Bearing	Chord Distance
C1	90°00'00"	25.00'	39.27'	N 43°20'08"W	35.36'	C41	22°46'00"	300.00'	119.21'	S 76°57'08"E	118.42'
C2	23°07'40"	360.00'	145.32'	S 76°46'18"E	144.33'	C42	90°00'00"	25.00'	39.27'	N 46°39'52"E	35.36'
C3	78°38'21"	25.00'	33.44'	S 79°23'21"W	31.00'	C43	87°29'43"	170.00'	259.60'	N 45°24'44"E	235.10'
C4	51°00'24"	230.00'	204.75'	N 63°32'21"E	198.06'	C44	13°25'17"	320.00'	31.38'	S 84°07'47"E	91.15'
C5	13°25'17"	450.00'	105.41'	S 84°07'47"E	105.17'	C45	30°22'28"	460.00'	244.80'	S 87°20'08"W	241.92'
C6	30°22'28"	400.00'	212.87'	S 87°20'08"W	210.37'	C46	90°00'00"	25.00'	39.27'	S 62°54'36"E	35.36'
C7	17°04'11"	500.00'	148.96'	N 80°37'29"E	148.41'	C47	47°30'51"	485.00'	385.27'	S 4°50'49"E	375.22'
C8	53°39'13"	275.00'	257.52'	S 64°00'49"E	248.21'	C48	8°59'05"	800.00'	125.45'	N 23°06'42"E	125.32'
C9	36°37'11"	230.00'	147.00'	N 55°29'48"W	144.51'	C49	90°00'00"	25.00'	39.27'	S 63°37'10"W	35.36'
C10	18°33'39"	300.00'	97.17'	S 64°31'38"E	96.75'	C50	47°20'33"	310.00'	256.15'	N 61°55'33"E	248.92'
C11	80°15'25"	25.00'	35.02'	S 34°32'25"W	32.23'	C51	120°23'15"	170.00'	357.20'	N 58°31'46"W	295.02'
C12	20°35'27"	400.00'	143.75'	S 34°11'59"W	142.98'	C52	90°00'00"	25.00'	39.27'	N 46°39'52"E	35.36'
C13	243°10'05"	60.00'	254.65'	S 34°30'42"E	102.22'	C53	12°24'19"	430.00'	93.10'	S 85°27'43"W	92.92'
C14	61°02'55"	50.00'	53.28'	N 56°32'53"E	50.79'	C54	43°20'30"	50.00'	37.82'	S 79°04'12"E	36.93'
C15	18°28'17"	460.00'	148.30'	S 35°15'34"W	147.66'	C55	266°41'01"	60.00'	279.27'	S 10°44'27"E	87.27'
C16	80°15'25"	25.00'	35.02'	N 04°22'00"E	32.23'	C56	43°20'30"	50.00'	37.82'	S 57°35'18"W	36.93'
C17	29°11'24"	300.00'	105.71'	N 71°22'51"E	105.17'	C57	90°00'00"	25.00'	39.27'	S 41°01'37"W	432.05'
C18	80°15'25"	25.00'	35.02'	N 55°42'01"E	32.23'	C58	90°00'00"	25.00'	39.27'	N 43°20'08"W	35.36'
C19	4°45'10"	650.00'	53.92'	N 86°32'51"E	53.90'	C59	91°44'26"	25.00'	40.03'	N 27°57'37"E	35.89'
C20	4°45'10"	590.00'	48.94'	N 86°32'51"E	48.93'	C60	15°19'45"	440.00'	117.73'	N 81°29'42"E	117.37'
C21	83°48'57"	25.00'	36.57'	N 42°15'48"E	33.40'	C61	53°39'13"	215.00'	201.33'	S 64°00'49"E	194.06'
C22	88°45'29"	365.00'	565.43'	S 44°40'44"W	510.56'	C62	36°37'11"	290.00'	185.35'	N 55°29'48"W	182.21'
C23	17°45'37"	800.00'	247.98'	N 62°00'23"E	246.99'	C63	72°43'49"	240.00'	304.65'	S 37°35'28"E	264.61'
C24	29°11'24"	300.00'	105.71'	N 71°22'51"E	105.17'	C64	90°11'32"	305.00'	480.10'	S 41°01'37"W	432.05'
C25	143°26'02"	60.00'	150.20'	N 71°24'42"E	113.94'	C65	19°30'21"	740.00'	251.93'	N 81°08'01"W	250.71'
C26	78°31'16"	25.00'	34.26'	S 38°57'19"E	31.64'	C66	90°00'00"	25.00'	39.27'	N 26°22'50"W	35.36'
C27	40°30'26"	250.00'	176.75'	N 81°31'50"E	173.09'	C67	8°59'05"	740.00'	116.04'	N 23°06'42"E	115.92'
C28	47°51'12"	230.00'	192.10'	S 85°12'13"W	186.56'	C68	6°10'46"	545.00'	58.78'	S 24°30'52"W	58.75'
C29	51°53'39"	25.00'	22.64'	N 83°10'59"E	21.88'	C69	84°44'36"	25.00'	36.98'	N 63°47'47"E	33.70'
C30	152°22'21"	60.00'	159.96'	N 46°34'38"W	116.53'	C70	17°03'17"	410.00'	122.04'	N 82°21'33"W	121.89'
C31	57°30'11"	25.00'	25.09'	S 09°51'28"W	24.05'	C71	242°57'52"	60.00'	254.49'	S 32°23'08"E	102.34'
C32	51°17'43"	230.00'	21.26'	N 25°14'48"W	21.25'	C72	62°57'52"	50.00'	54.95'	S 57°37'52"W	52.22'
C33	77°32'39"	25.00'	33.84'	S 81°22'16"E	31.31'	C73	17°08'59"	350.00'	104.76'	S 82°18'42"E	104.37'
C34	8°32'04"	700.00'	104.27'	S 84°07'26"W	104.17'	C74	84°05'14"	25.00'	36.69'	S 31°41'36"E	33.48'
C35	90°00'00"	25.00'	39.27'	N 43°23'28"E	35.36'	C75	28°15'37"	545.00'	288.81'	S 03°46'48"E	266.10'
C36	90°00'00"	25.00'	39.27'	N 46°36'32"W	35.36'						
C37	8°32'04"	640.00'	95.33'	S 84°07'26"W	95.24'						
C38	78°11'32"	25.00'	34.12'	N 40°45'36"E	31.53'						
C39	11°34'21"	230.00'	46.45'	N 72°03'03"E	46.38'						
C40	78°48'21"	25.00'	34.39'	S 26°09'58"E	31.74'						



CERTIFICATE OF FINAL PLAT APPROVAL

Pursuant to the Creek County Subdivision Regulations and all other conditions and approval having been accepted, this document is hereby accepted. This Certificate is hereby executed under the said rules and regulations.

By: _____ Date: _____
Planning Commission Chair

By: _____ Date: _____
Chairman, Creek County Commission

Hickory Falls
Date of Preparation: October 25, 2021